



## ***Making every trip special.***

Be charmed by the Majesty 400's blend of practicality and performance. The die-cast aluminium chassis and low centre of mass boosts handling at all speeds, while the twin-eye bodywork offers fuel-saving aerodynamics and weather protection.

A powerful 395cc fuel-injected 4-stroke engine serves up refined power, and the adjustable levers give the braking system an optimised feeling. An ABS model is also available.

For longer trips, there's a dual seat, storage for two full-face helmets and a handy glovebox plus twin rear shocks for greater comfort and a large capacity fuel tank. And, with automotive-style instrumentation, it has all you need for a special trip.

- Aerodynamic, shielding bodywork on die-cast chassis
- Double front disc brakes with adjustable lever
- All-aluminium fuel-injected 4-stroke 395cc engine
- Multiple, spacious storage compartments
- Full automotive-style instrumentation
- Spacious and comfortable dual seat



## ***The best of both worlds***

Our maxi-scooters combine the luxuries of a sports-touring motorcycle with the riding posture of a scooter, making life comfortable and easy for both rider and passenger.

Large liquid cooled, 4-stroke, 4-valve engines ensure great performance in town and on country roads. Wraparound fairing and high windshields also offer great all-weather protection for longer journeys and commutes.

Disc brakes both front and back rapidly bring the scooters to a stop, while ABS models offer even more braking confidence in the wet. It is sports touring comfort and performance in a scooter-shaped package.







### **Aerodynamic, weather-cheating bodywork**

The remarkable ergonomics of the Majesty 400 set this scooter apart from the crowd. The die-cast aluminium/steel chassis offers optimum strength and weight. While streamlined bodywork offers unbeatable protection against the elements. And with a comfortable dual seat, you'll always arrive at your destination feeling fresh and relaxed.



### **Adjustable braking system**

Large twin 267 mm front disc brakes and a 267 mm disc brake at the rear mean you'll stop quickly and securely. The adjustable levers give riders an optimised brake feeling, while a master cylinder adds to performance. An ABS model is also available with anti-lock technology to help preserve steering control when braking on wet roads.



### **Quiet power from a fuel-injected 395cc engine**

The all-aluminium, single-cylinder 4-stroke engine delivers power and torque from very low revs. Positioned low in the chassis, it helps achieve a low centre of gravity to improve handling. Fuel injection and an efficient four-valve cylinder head deliver dominant but relaxed power and provide excellent economy and low emissions.



### **Twin-eye headlight assembly**

Yamaha's trademark twin-eye headlights and fully-integrated rear lights give the Majesty 400 stylish looks and a commanding presence on the road. A bright indicator assembly enhances safety through better visibility, making this a scooter you'll feel comfortable riding at night.



### **Multiple storage compartments**

Underneath the comfortable, two-person sculpted seat is enough room for two full-face helmets, making the Majesty 400 ideal for business or pleasure. For accessories and valuables, a lockable glovebox just ahead of the rider's knees is perfect for both quick access and safe storage.



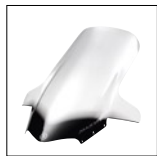
### **Full automotive-style instruments**

A car-like analogue console gives this scooter a top-quality feel. The full automotive-style instruments tell you everything you might need to know along the way. The speedometer and rev counter provide a clear view of vital information so you can enjoy a worry-free ride.

ENGINE	
Type	Liquid-cooled, DOHC, 4-valve, 4-stroke single cylinder
Displacement	395cc
Bore x stroke	83.0 x 73.0 mm
Compression ratio	10.6 : 1
Maximum Power	25.0 kW @ 7,000 rpm
Maximum Torque	36.3 Nm @ 6,000 rpm
Lubrication system	Wet sump
Fuel supply system	Electronic Fuel Injection
Ignition system	TCI
Starter system	Electric
Transmission system	V-Belt Automatic

DIMENSIONS	
Overall length	2,230 mm
Overall width	780 mm
Overall height	1,380 mm
Seat height	760 mm
Wheelbase	1,565 mm
Min. ground clearance	120 mm
Wet weight (incl. full oil and fuel tank)	220 kg / ABS: 223 kg
Fuel capacity	14 litres

CHASSIS	
Front suspension	Telescopic fork
Front wheel travel	120 mm
Rear suspension	Unit swing
Rear wheel travel	104 mm
Front brake	Hydraulic dual disc Ø 267 mm
Rear brake	Hydraulic single disc Ø 267 mm
Front tyre	120/80-14
Rear tyre	150/70-13



### Only the best will do

We like to think you get out what you put in, which is why we recommend genuine Yamaha Parts and Accessories. The same innovation and stringent quality controls behind our world-leading scooters goes into all parts and accessories – from cases and carriers for extra storage, to stickers and graphics, and our own apparel – including riding jackets, gloves and casual wear. With the Yamaha name you're assured of quality, reliability and performance. Yamalube® is our own range of high-tech lubricants. The lifeblood of Yamaha engines, they are designed to cope however you use your scooter – from occasional leisure use to regular commuting.



[www.yamaha-motor-acc.com](http://www.yamaha-motor-acc.com)



Always wear a helmet, eye protection and protective clothing. Yamaha encourages you to ride safely and respect fellow riders and the environment. Specifications and appearance of Yamaha products shown here are subject to change without notice and may vary according to requirements and conditions. For further details, please consult your Yamaha dealer. Colours may vary from country to country. Please consult your Yamaha dealer for further details.